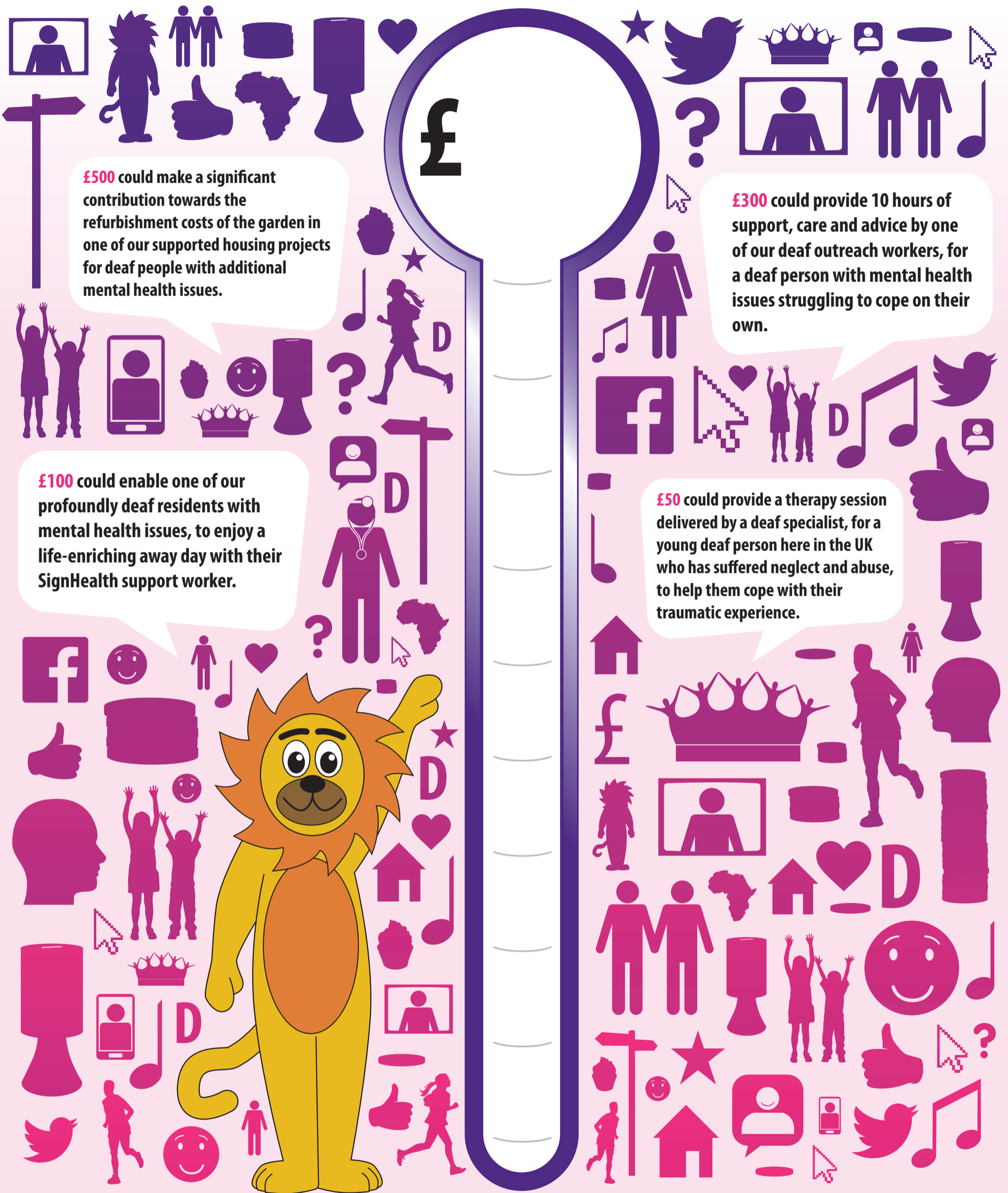


# MONEY METER!



**£500** could make a significant contribution towards the refurbishment costs of the garden in one of our supported housing projects for deaf people with additional mental health issues.

**£300** could provide 10 hours of support, care and advice by one of our deaf outreach workers, for a deaf person with mental health issues struggling to cope on their own.

**£100** could enable one of our profoundly deaf residents with mental health issues, to enjoy a life-enriching away day with their SignHealth support worker.

**£50** could provide a therapy session delivered by a deaf specialist, for a young deaf person here in the UK who has suffered neglect and abuse, to help them cope with their traumatic experience.

**RAISING MONEY FOR THE DEAF HEALTH CHARITY SIGNHEALTH**

[www.sign2sing.org.uk](http://www.sign2sing.org.uk)